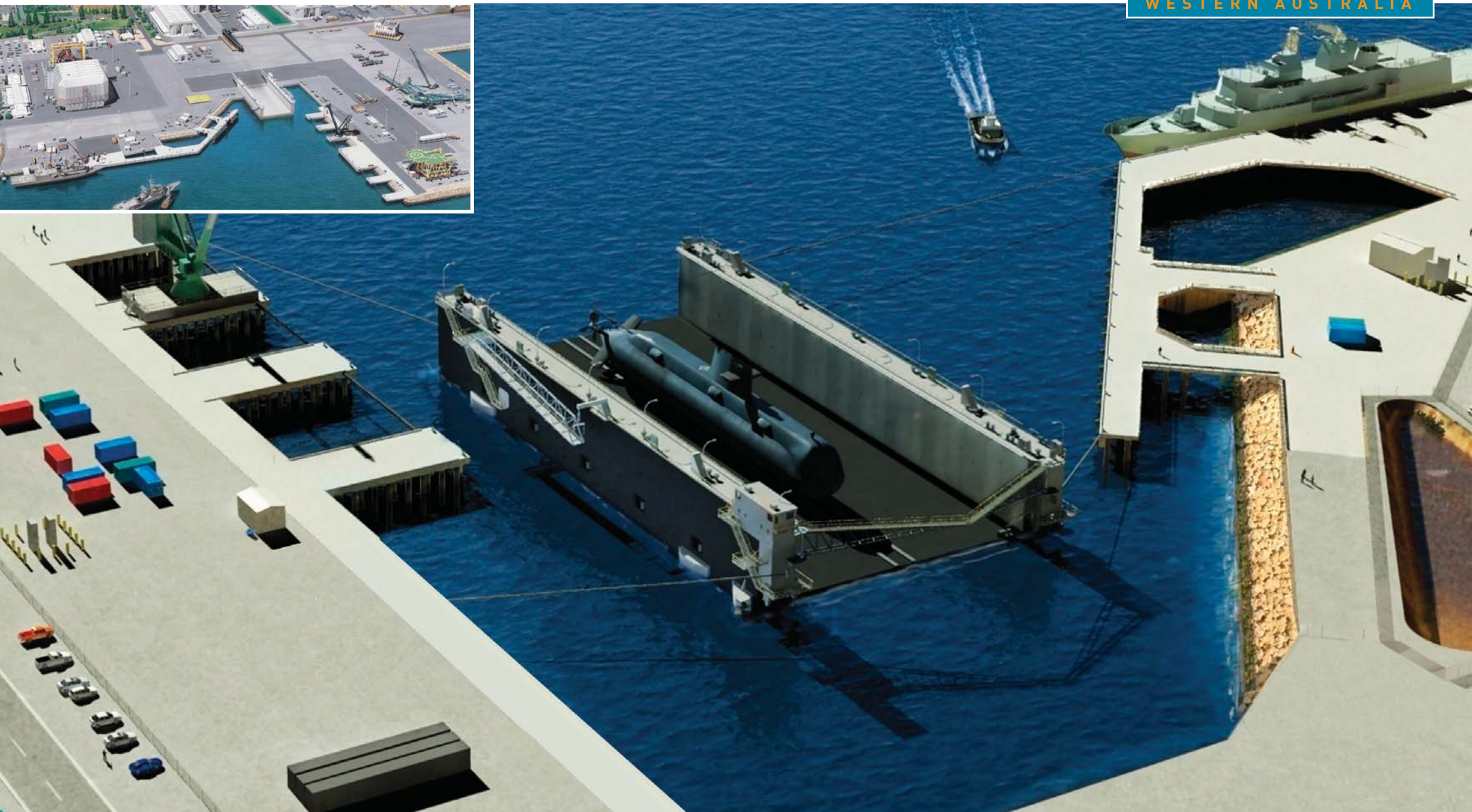
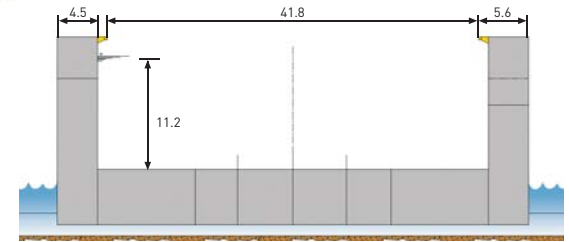
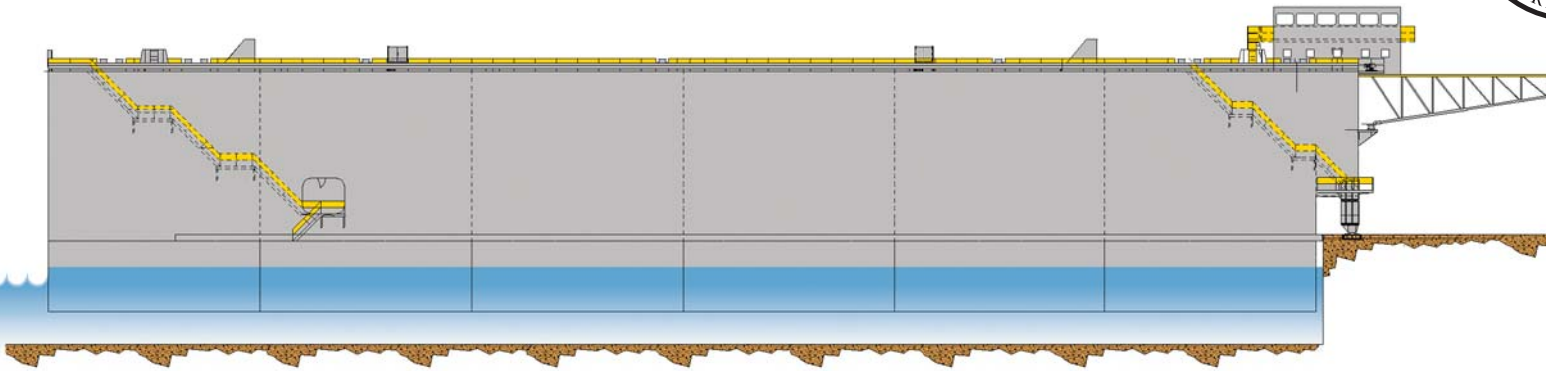


Australian Marine Complex Common User Facility - Floating Dock



Floating Dock - Capabilities



PRINCIPAL CHARACTERISTICS

Length overall	102.3m
Length of pontoon	99.0m
Beam overall	53.0m
Width inside sidewalls	44.0m
Clear width inside fenders	41.8m
Depth of pontoon	5.5m
Height of sidewalls above baseline	18.7m
Freeboard	2.0m
Max depth water above pontoon deck	11.2m
Maximum draught	16.7m
Maximum allowable vessel draught*	9.2m
Maximum allowable loading	150 t/m
Lifting capacity	12,000 t
Pumping time to raise maximum load	2 hrs
Transfer capacity (MLW)	3500 t
Average transfer load distribution	56 t/m
Maximum distributed transfer load	69 t/m
* Based on 2m block/cradle height	

CLASSIFICATION

Bureau Veritas 1 * hull . Machinery

EQUIPMENT

Power generation	Main 1 x 2000kva Emergency 1 x 600 kva
Dewatering pumps	4 x 75 t/min
Fire pumps	2 x 100 t/hr
Manoeuvring	6 x 30 t winches
Control system	automated dock evolution control system
Vessel haul in	4 x 20 t capstan
Vehicle access ramps	4 x berthing trolleys 2 off

Printed on recycled paper